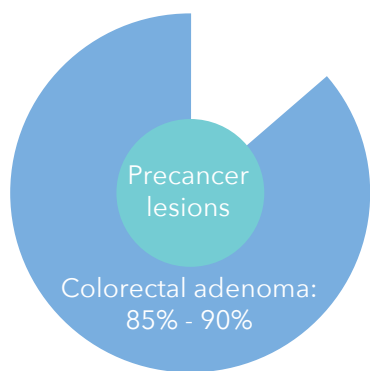
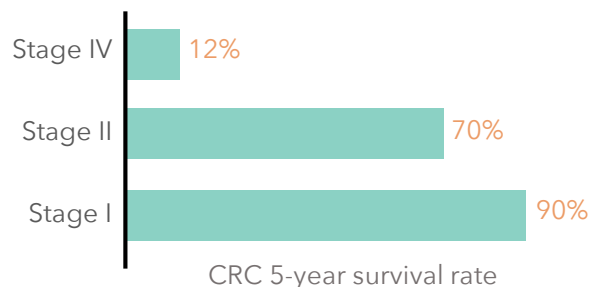


What is colorectal cancer (CRC)?

- 3rd most common cancer worldwide
- High survival rate when diagnosed at early stage



- 85-90% of CRC develops from adenomas
- Early detection and removal of precancerous adenomas lowers CRC incidence rate

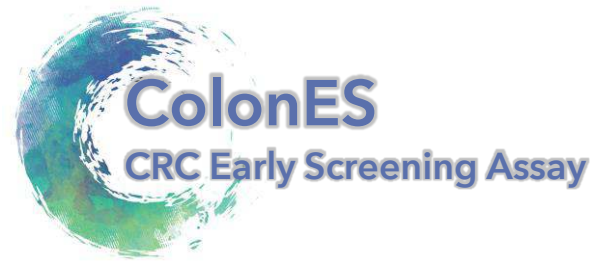
Current tests are limited

Method	Invasive	Compliance	Accuracy
Colonoscopy	Yes	Low	High
Stool-based	No	Low	Low
Blood-based	No	High	Low

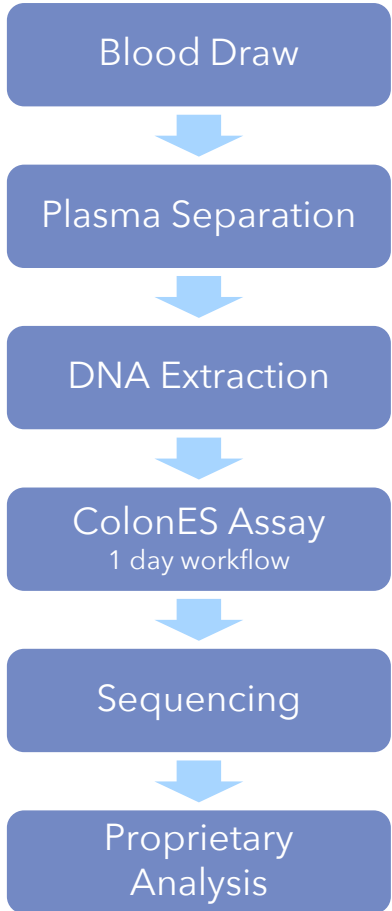
ColonES - Fast, Efficient and Scalable

- Plasma-based assay using as little as 10 ng of circulating tumor methylated DNA (ctmDNA)
- Interrogates >20k methylation sites in >600 regions of interest
- Highly efficient targeted sequencing library construction
- Specialized analysis that reduces noise and increases accuracy



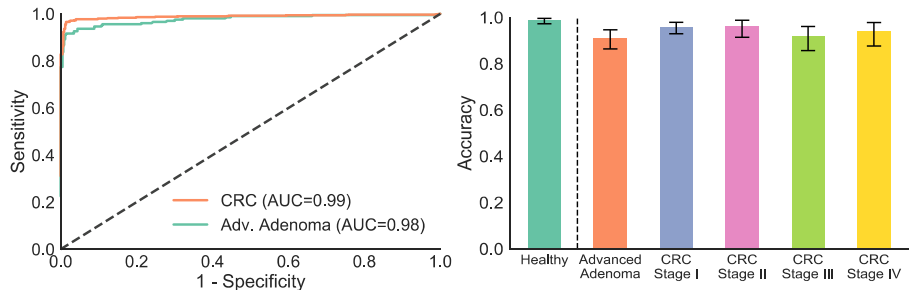


Assay Workflow



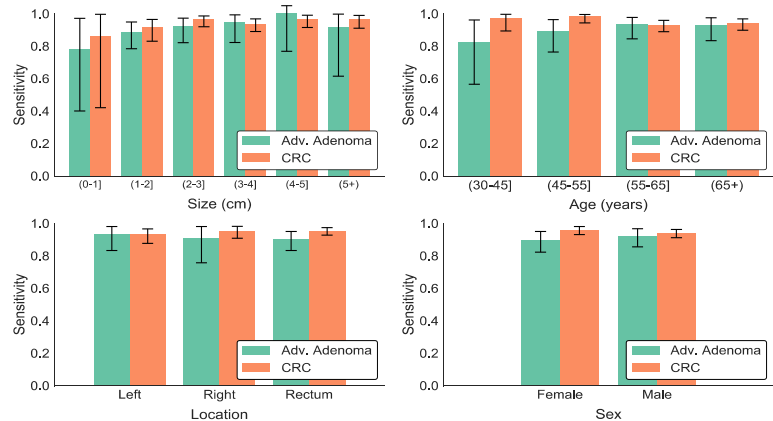
Results from 1,283 Healthy and Affected Samples

Performance of ColonES



- High AUC for both CRC and advanced adenomas.
- High sensitivity even in early stage CRC and adenomas.

Covariate Analysis



- High sensitivity regardless of tumor size, tumor location, subject age, or subject sex.

